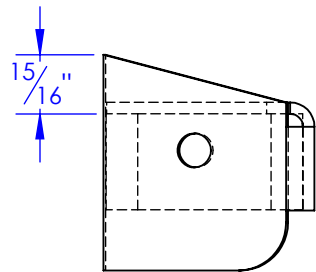
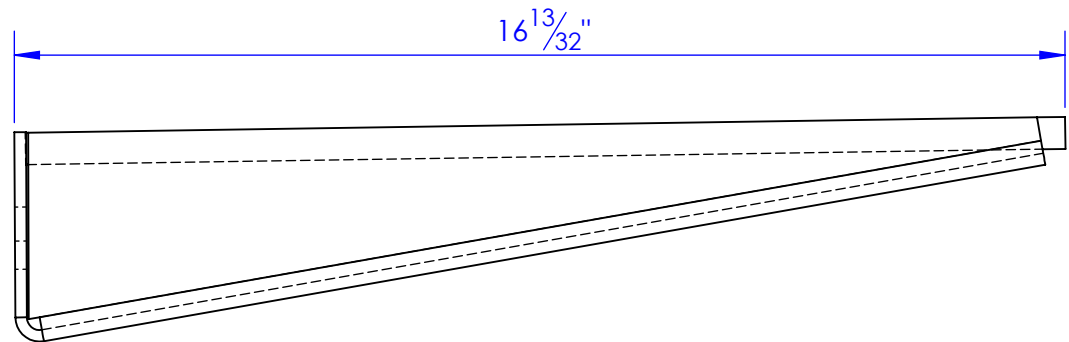
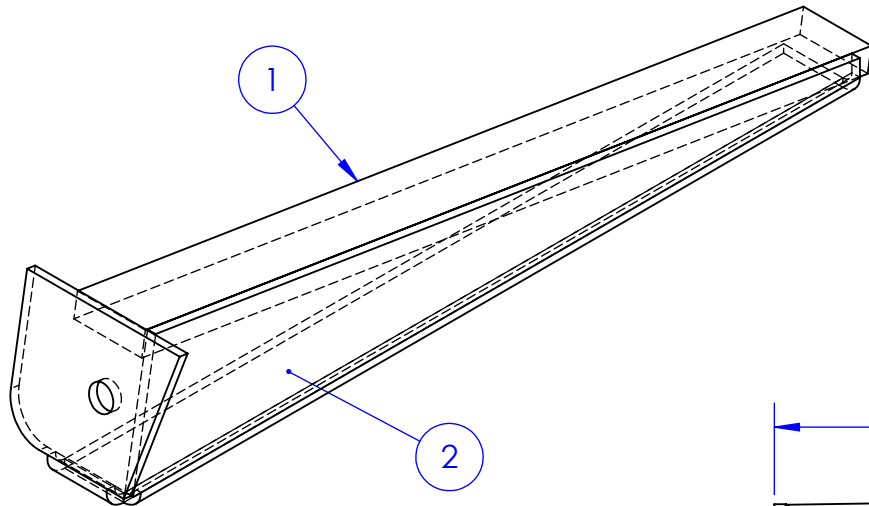


ITEM NO.	PART NUMBER	DESCRIPTION	MATERIAL	DRAWING #	QTY.
1	FI .5 x 1.5 L 16.25	LENGTH: 16-1/4"	FI 1/2" x 1-1/2"	STOCK	1
2	FP-HFL-622 C	END CAP, FRONT, PIVOT END, HYDRA FLKR.	7 ga HRS.	40-1207	1

	REVISIONS		
REV.	DESCRIPTION	DATE	APPROVED
B	REMOVED 1/4" GAP	2/9/2012	
C	REVISE ITEM 2	1/10/2017	



**PROPRIETARY AND CONFIDENTIAL**  
 THE INFORMATION CONTAINED IN THIS  
 DRAWING IS THE SOLE PROPERTY OF TRIPLE  
 C INC. ANY REPRODUCTION IN PART OR  
 AS A WHOLE WITHOUT THE WRITTEN  
 PERMISSION OF TRIPLE C INC. IS PROHIBITED.

DIMENSIONS ARE IN INCHES  
 TOLERANCES:  
 FRACTIONAL  $\pm 1/16$   
 ANGULAR: MACH  $\pm 1$  BEND  $\pm$   
 TWO PLACE DECIMAL  $\pm 010$   
 THREE PLACE DECIMAL  $\pm 005$

MATERIAL --  
 DO NOT SCALE DRAWING

	NAME	DATE
DRAWN	ETHAN	1/10/2017
PART #	FP-HFL-624 B	
ASM #		
COMMENTS:		

P.O. BOX 248, SABETHA, KS 66534		
<b>TRIPLE C</b> INC.		
SIZE <b>A</b>	DWG. NO. <b>40-1205 C</b>	REV. <b>C</b>
SCALE: 1:3	WEIGHT: LBS.	SHEET 1 OF 1